

**PARTS
UNLIMITED**

**PARTS
EUROPE**

**PARTS
CANADA**

“DISTRIBUTED IN U.S. BY PARTS UNLIMITED”

DISTRIBUTED IN THE U.S. BY:
DISTRIBUÉ AUX U.S.A. PAR:
VERTRIEBEN IN DEN U.S.A. DURCH:
DISTRIBUITO NEGLI USA DA:
DISTRIBUIDO EN LOS EE.UU. POR:
DISTRIBUTEUR IN DE VS:
DISTRIBUÍDO NOS E.U.A. POR:
РАСПРОСТРАНЯЮТСЯ В США:
アメリカ:

“DISTRIBUTED IN EUROPE BY PARTS EUROPE”

DISTRIBUTED IN EUROPE BY:
DISTRIBUÉ EN EUROPE PAR:
VERTRIEBEN IN EUROPA DURCH:
DISTRIBUITO IN EUROPA DA:
DISTRIBUIDO EN EUROPA POR:
DISTRIBUTEUR IN EUROPA:
DISTRIBUÍDO NA EUROPA POR:
РАСПРОСТРАНЯЮТСЯ В ЕВРОПЕ:
ヨーロッパ:
PARTS EUROPE GMBH
CONRAD-ROENTGEN-STR. 2., 54332
WASSERLIESCH, GERMANY

“DISTRIBUTED IN CANADA BY PARTS CANADA”

DISTRIBUTED IN CANADA BY:
DISTRIBUÉ AU CANADA PAR:
VERTRIEBEN IN KANADA DURCH:
DISTRIBUITO IN CANADA DA:
DISTRIBUIDO EN CANADÁ POR:
DISTRIBUTEUR IN CANADA:
DISTRIBUÍDO NO CANADÁ POR:
РАСПРОСТРАНЯЮТСЯ В КАНАДЕ:
カナダ:

ICON® IS A REGISTERED TRADEMARK. ALL RIGHTS RESERVED. COPYRIGHT© 2017 LEMANS CORPORATION.
REPLACEMENT PARTS AND SPECIFICATIONS SUBJECT TO CHANGE WITHOUT NOTICE. PRINTED IN SOUTH KOREA.
J-TECH CORP. Made in South Korea ECE/DOT/SAI/PSC

icon
RIDEICON.COM

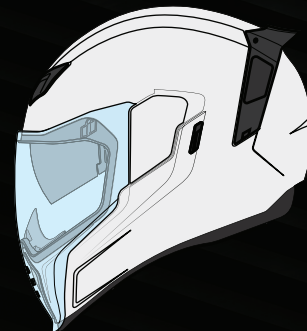
icon

NOT TO BE REMOVED EXCEPT BY CONSUMER

DOT // ECE

AIRFLITE™

OWNERS INSTRUCTION MANUAL



SAFETY WARNING: FOR YOUR SAFETY, IT IS IMPORTANT THAT YOU COMPLETELY READ THIS OWNER'S MANUAL AND ALL WARNING LABELS ON AND INSIDE THE HELMET.

The instructions in this manual are designed to help you select the right helmet, wear it properly, take care of it and know when to replace it. Failure to follow these instructions may increase your risk of serious injury or death in an accident. In order to get the most protection possible from your helmet, you should always do the following - Wear your helmet when you ride, Handle your helmet carefully to avoid accidental damage and ride safe. Do not take risks because you are wearing a helmet.

AIRFLITE™

REDEFINING VERSATILITY.

The dynamic needs of the modern motorcyclist; intrinsic to each definitive riding posture, calls for purpose built tactical protective equipment. But the modern riding posture is variable, the modern motorcyclist is constantly re-defining their own needs. The ICON AIRFLITE™ helmet is our answer to the do-all ride-all, for the motorcyclist that requires a new definition of motorcycle helmet.

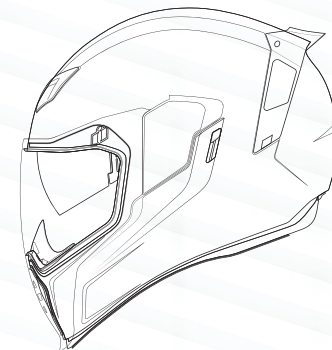
Based on the success of the AIRFRAME PRO™, the ICON AIRFLITE™ inherits a dynamic stance for the modern hypersport motorcycle rider while adding the versatility of a Drop-Shield™.

Continuing with our commitment to excellence, the ICON AIRFLITE™ is constructed with premier manufacturing processes and stringent quality assurance procedures. This, combined with rigorous testing, assures that the ICON AIRFLITE™ meets the highest safety standards in the world (DOT,ECE,PSC,SAI).



CONTENTS

// CONSTRUCTION	03
// SHELL & EPS	04
// CHOOSING THE CORRECT HELMET SIZE	05
// PROPER FITTING	06
// CHINSTRAP	07
// USING YOUR HELMET CORRECTLY	08
// INSPECTING YOUR HELMET	08
// AIRFLITE SHIELDS	09
// FLITESHIELD CHANGE AND REMOVAL	11
// DROPSHIELD CHANGE AND REMOVAL	12
// INTERIOR	13
// COMFORT LINER REMOVAL	14
// VENTING SYSTEM	16
// CARE AND CLEANING	17
// ADVISORY	18



USE INSTRUCTIONS AND WARNINGS: Before using this helmet, be sure to read this instruction manual and retain it after reading. It contains valuable information that will help you maximize the performance and life of the helmet.

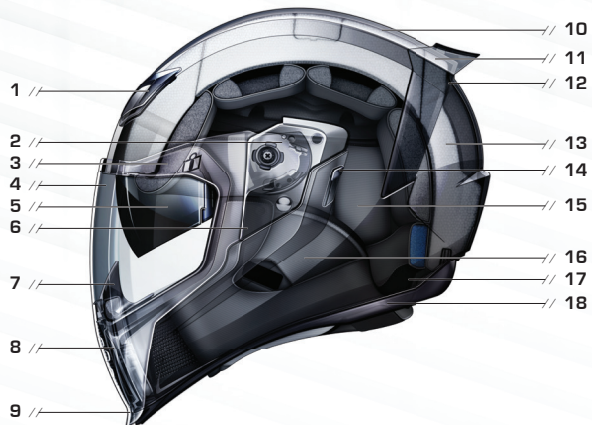
SAFETY WARNING: Riding a motorcycle is a dangerous activity. No helmet can protect a wearer against all possible impacts. When riding, always wear a helmet, eye protection, protective clothing, gloves and boots. There is no assurance that serious injury or death can be avoided even if you wear the helmet shown in this manual. Take all precautions to avoid every risk when riding a motorcycle. This helmet is not meant for use as a fire retardant product and does not contain any fire retardant materials. Please ensure that your ICON® products fit properly. Improperly fitting products can impair your ability to control your motorcycle.



CONSTRUCTION

The ICON® AIRFLITE™ is engineered to the ICON WORLD STANDARD, which meets DOT FMVSS 218 (US), ECE 22.05 (EUROPE), SAI AS1698:2006 (AUSTRALIA) & PSC (JAPAN) Helmet Safety Standards. Over 50 countries officially recognize these extensive head protection standards. Refer to the diagram below to familiarize yourself with specific names and terms used on the AIRFLITE™ helmet before attempting to repair or replace parts on the helmet.

- 1 // FOREHEAD VENTS
- 2 // SHIELD RELEASE SYSTEM
- 3 // EYEPORT GASKET
- 4 // FLITESHIELD™
- 5 // DROPSHIELD™
- 6 // SIDE PLATES
- 7 // BREATH DEFLECTOR
- 8 // MOUTH VENT
- 9 // SHIELD LOCKING KNOB
- 10 // OUTER SHELL
- 11 // REAR SPOILER
- 12 // EXHAUST VENTS
- 13 // DUAL DENSITY EPS
- 14 // DROPSHIELD™ SWITCH
- 15 // COMFORT LINER
- 16 // CHEEK PADS
- 17 // EARPLUG STORAGE POCKETS
- 18 // BASE GASKET



MAKE NO MODIFICATIONS. To maintain the full effectiveness of this helmet, there should be no alteration to the structure of this helmet or its component parts. Paints and adhesives may damage and render your helmet ineffective, without the damage being visible to the user.



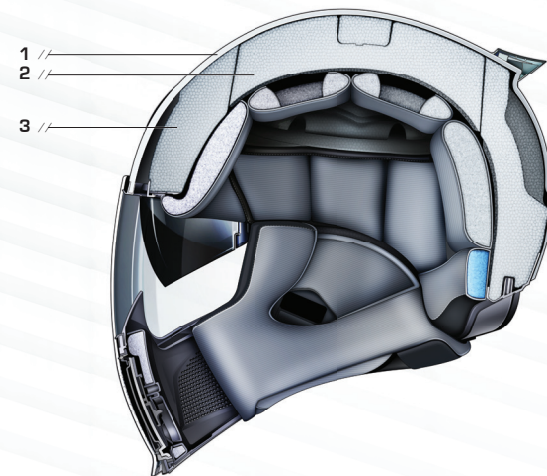
SHELL & EPS

The injection-molded polycarbonate PC-ABS shell of the ICON® AIRFLITE helmet is manufactured under the most stringent quality control standards available on the market today.

The ICON® AIRFLITE's dual-density Expanded-Polystyrene liners are engineered to offer maximum impact absorption and force dissipation.

Additionally, both liners are channeled with an extensive series of directional air ducts to distribute airflow from the outer ventilation system.

- 1 // POLYCARBONATE SHELL
- 2 // EPS DENSITY 2
- 3 // EPS DENSITY 1



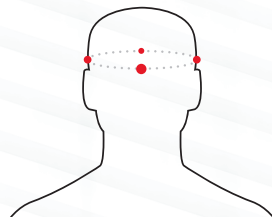


CHOOSING THE CORRECT HELMET SIZE

Helmet fit is critical to helmet protective performance. Different helmets fit differently due to differences in design and construction. The correct helmet size can only be checked and confirmed by physically fitting the helmet to the user. Always try the helmet on in a store, before purchasing it, to be sure you are purchasing the correct sized helmet for you.

1. Wrap flexible tape measure approximately one inch above eyebrows and ears.
2. Use this measurement to find your "inches" or "centimeters" head size in our helmet sizing chart.

SAFETY WARNING: Never buy a used helmet or borrow someone else's helmet. Over time the protective foam in helmets will adjust to the contours of a user's head. A used or borrowed helmet may not offer as much protection as a new helmet. Wearing the wrong size helmet can increase your risk of serious injury or death in an accident. A helmet that is too large for your head may be dislodged or knocked off in an accident. To select the right size helmet for your head, follow these instructions.



HEAD MEASUREMENT

WARNING: For adequate protection, this helmet must fit snugly and be securely attached.

HELMET SIZING CHART

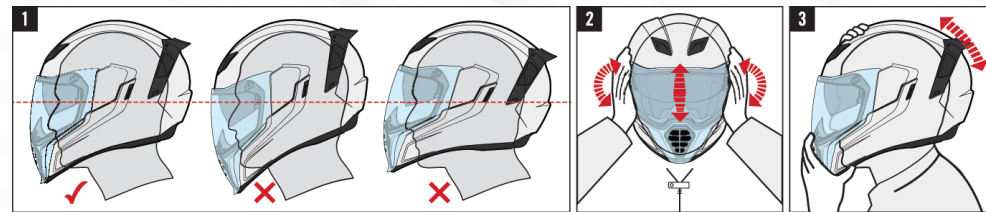
SHELL	XS	S	M	L	XL	2XL	3XL
HAT SIZE	6 ⁵ / ₈ - 6 ³ / ₄	6 ⁷ / ₈ - 7	7 ¹ / ₈ - 7 ¹ / ₄	7 ³ / ₈ - 7 ¹ / ₂	7 ⁵ / ₈ - 7 ³ / ₄	7 ⁷ / ₈ - 8	8 ¹ / ₈ - 8 ¹ / ₄
INCHES	20 ⁷ / ₈ - 21 ¹ / ₄	21 ⁵ / ₈ - 22	22 ³ / ₈ - 22 ³ / ₄	23 ¹ / ₈ - 23 ¹ / ₂	24 - 24 ³ / ₈	24 ³ / ₄ - 25 ¹ / ₈	25 ¹ / ₂ - 26
CENTIMETERS	53-54	55-56	57-58	59-60	61-62	63-64	65-66

SAFETY WARNING: The helmet size chart is only for reference. Always try the helmet on and follow this manual's instruction for proper fit. If you are unable to find a size of this helmet style that fits you properly, please try another certified helmet style.



PROPER FITTING

No helmet can protect the user against all foreseeable impacts. For your safety, please choose a helmet in the size that fits your head (refer to the helmet size chart on page 5). For maximum head protection, your helmet must be of proper fit and the retention system must be securely fastened under the chin.



To ensure a proper fit, please follow the steps below:

1. Position the helmet on your head so that it sits low on your forehead. If you can't see the edge of the brim at the extreme upper range of your vision, the helmet is probably out of place. Adjust the retention system so that when in use, it will hold the helmet firmly in place. **Always make sure you can see well enough to safely operate your motorcycle.**
2. With the chinstrap still fastened as tightly as possible, take hold of the helmet with both hands. Without moving your head, try to move the helmet up and down, and from side to side. You should feel the skin of your head and face being pulled as you try to move the helmet. If you can move the helmet around easily, it is too big. Try a smaller size.
3. Now, with the chinstrap secured, put your hands flat on the back of the helmet and try to pull the helmet off by rotating it forward. Then, put your hands on the front of the helmet, and try to push the helmet off by rotating it toward the rear. If the helmet starts to come off in either direction, the helmet is either too large, or the chinstrap is not fastened tightly enough. **If helmet comes off, try another size or another model.**

Please note that the visor is adjustable. Try the helmet with the visor in all positions, prior to purchase, to make sure that the helmets meets your requirements and that the visor does not interfere with your vision when in the open position. These steps should be repeated until you are able to find the right size helmet for you.



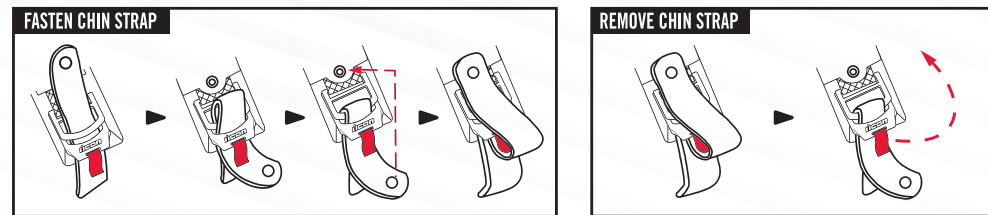
CHINSTRAP

In order for your helmet to function properly, the chinstrap must always be securely fastened while in use. With the chinstrap fastened, it should not be possible to remove the helmet from your head by pulling up at the center rear. Check periodically to see that the vibration has not caused the chinstrap to loosen. Just give a little tug to make sure it is still tight.

To securely fasten the D-ring retention system, thread the end of the chinstrap through the D-rings only as shown in the diagram below. Fasten the female snap of the chinstrap to the male snap to secure the loose end of the chinstrap after the chinstrap is securely fastened. The only function of the snap fastener on the end of the chinstrap is to keep it from flapping in the air stream. It is not part of the retention system and should not be used independently without passing through the D-rings as illustrated below.

To release the D-ring retention system, unsnap the loose end of the chinstrap from its fastener. Then pull on the red flag attached to the end of the lower D-ring to loosen the strap. Once loose, feed the end of the strap back through the D-rings to fully release the chinstrap.

PLEASE MAKE SURE THAT THE CHINSTRAP IS FASTENED AS INSTRUCTED ABOVE. FAILURE TO DO SO MAY RESULT IN FATAL INJURY.



SAFETY WARNING: Do not rely on the snap to secure the helmet. The snap is provided only to prevent the strap from flapping in the air. Fasten the retention system only in the following manner of the picture.



USING YOUR HELMET CORRECTLY

[SAFETY WARNING]: To reduce the risk of serious injury or death, always use your helmet correctly.

- Never adjust your helmet accessories while riding – Only make helmet adjustments when stopped.
- Never drop your helmet – Dropping your helmet may crack the shell or damage the protective foam. The damage may not be visible. Your helmet is only designed for ONE impact. Refer to “REPLACEMENT RECOMMENDATION” for more information.
- Never wear anything between your head and your helmet – This may reduce the effectiveness of your helmet.
- Never hang or hook your helmet on anything including mirror stalks, handle bar, or sissy bars – Doing so may cause damage to the helmet protective foam or liner.
- Never use insect repellent on or around your helmet – Insect repellent may damage your helmet’s visor, shell, protective foam, or other components.
- Never expose helmet to gasoline or gasoline fumes – Gasoline may damage your helmet’s visor, shell, protective foam, or other components.

INSPECTING YOUR HELMET BEFORE EVERY USE

[SAFETY WARNING]: To reduce the risk of serious injury or death and to help prevent damage to your helmet:

- Check the shield and shield ratchet – retighten shield ratchet screws if necessary. Be sure not to over-tighten any screws. Plastic base plate screws can break and aluminum screws can strip the screw sleeves if over-tightened.
- Check for helmet damage. If your helmet is damaged or cracked, stop using it immediately. See “REPLACEMENT RECOMMENDATION” section for further information. If your helmet has been dropped, you may not be able to see the damage.
- Check for worn or damaged parts. Plastic components may wear out over time. If you find worn or damaged parts, replace them or purchase a new helmet. For a complete listing of helmet replacement parts and accessories including liners, cheek-pads, side-plates, breath deflectors, etc. visit us at WWW.RIDEICON.COM
- Make sure that the liner and cheek pads are properly in place and that the chinstrap system is secured.

AIRFLITE™ SHIELDS

FLITE SHIELD™
DISTORTION FREE

The ICON® AIRFLITE™ is equipped with a clear ICON® FliteShield™, providing you with a clear and distortion-free line of sight.

The clear ICON® FliteShield™ shield supplied with this helmet meets Regulation VESC-8. Visors with the marking indicating "daytime use only" are not suitable for use during the hours of darkness or in conditions of poor visibility. Make sure the face shield is always in perfect condition.

DROP SHIELD™

Instead of carrying extra FliteShield™ for changing light conditions, with the flip of a switch, engage the tinted DropShield™ hidden within the helmet.

Tinted DropShields should not be used during hours of low light; instead swap out for a Yellow lens or just use the Clear ICON® FliteShield™. The DropShield™ visor must only be used while the main face shield is in the fully closed position.

To order replacement lenses in a variety of colors, visit your local dealer or www.rideicon.com.

SAFETY WARNING: Your AIRFLITE™ is originally supplied with a Clear FliteShield™ and tinted DropShield™. Under no circumstances should a rider use a tinted DropShield™ while a tinted FliteShield™ is attached. Duplicated tinted shields will limit your vision.

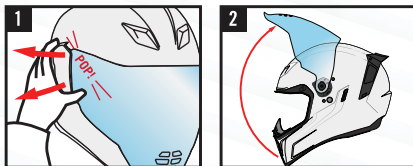




FLITESHIELD™ CHANGE AND REMOVAL

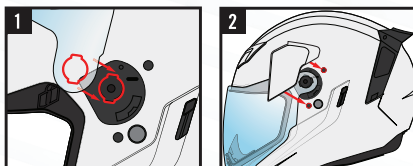
REMOVAL:

1. To remove the FliteShield™, first remove the sideplates by grasping them firmly from the front and top and pulling outwards. The two beveled pins on each sideplate will "POP" out of the shell holes.
2. Once the sideplates are removed, fully open the FliteShield™ and continue to rotate the shield past the full open position. The FliteShield™ will disengage from the pivot posts once rotated fully to the rear.



INSTALLATION:

1. To install the FliteShield™, align the pivot holes onto the pivot posts while holding the shield in the full open position. Push each pivot hole onto the posts to snap in place and rotate the shield forward into the fully closed position.
2. Reattach the sideplates by aligning the sideplate pins to the holes on the shell and pushing toward and into the helmet.



This helmet is unsuitable for use with goggles.

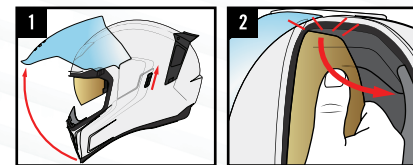
SAFETY WARNING: Do not ride without the sideplates attached. If the shield is opened during riding use without sideplates the force of air against the open shield may cause the shield to disengage from the helmet.



DROPSHIELD™ CHANGE & REMOVAL

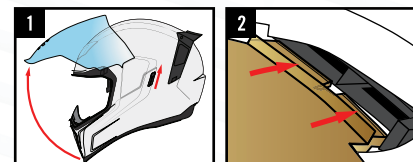
REMOVAL:

1. Open the FliteShield™ and lower the Drop-Shield™
2. While firmly holding the helmet, pull the Drop-Shield™ forward and down until two clicks are heard and the shield is free from both side clips.

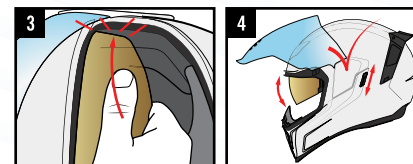


INSTALLATION:

1. Begin by placing the Drop-Shield™ Switch in the DOWN Position.
2. Start with the SWITCH side of the Drop-Shield™. Align the tabs with the clips for the internal mechanism and push firmly on the lens until you hear a "CLICK" sound.
3. Repeat the process with the opposite side of the Drop-Shield™.
4. Once installed, operate the Drop-Shield™ Switch to ensure proper installation, and clean the Drop-Shield™ with an ICON Lens wipe or microfiber cloth.



Some users may find it easier to change the Drop-Shield™ with the FliteShield™ and Breath Deflector™ removed. If the FliteShield™ was removed for Drop-Shield™ replacement, ensure the FliteShield™ has been re-installed correctly before riding. The Drop-Shield™ is not designed to be used without the FliteShield™.



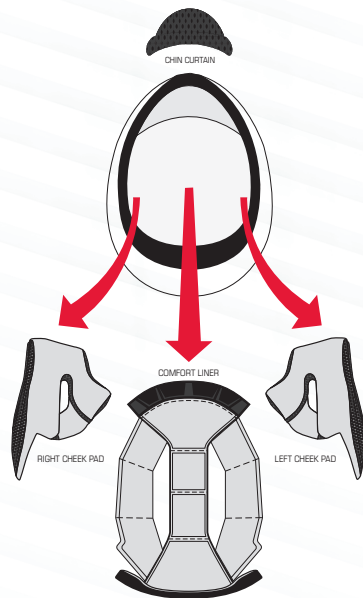
SAFETY WARNING: Incorrect installation of the Drop-Shield™ may adversely affect its performance.



INTERIOR

The ICON® AIRFLITE™ helmet features a customizable interior lined with Icon's exclusive moisture wicking material, HydraDry™.

The size of a helmet is based on a combination of three factors: outer shell size, inner eps thickness, and interior component thickness. The fit of the helmet can be customized by replacing your existing cheekpads with thinner cheekpads (for a looser fit), or thicker cheekpads (for a tighter fit). To order replacement interior components visit your local dealer or www.rideicon.com.

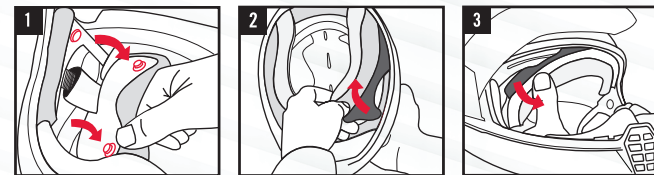


SAFETY WARNING: The liner is essential to the intended performance of the helmet, it must be properly installed when using the helmet.



COMFORT LINER REMOVAL

How to remove your interior for cleaning or replacement:

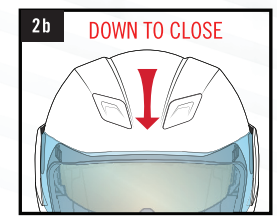
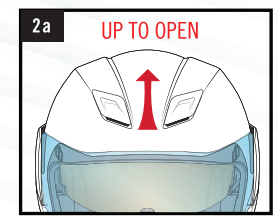
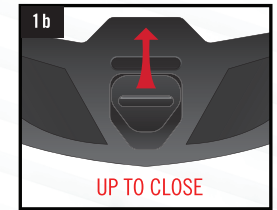
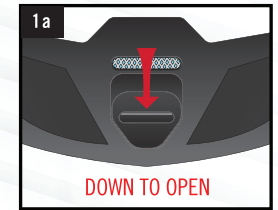


1. Release each cheekpad from the helmet by pulling inward, freeing it from the attachment system.
2. Flip your helmet over and pull on the cheekpad. Note how the cheekpad plate slips between the helmet shell and EPS liner for reassembly.
3. Remove your comfort liner by releasing it from the two snap system on the back of the helmet. Then remove the crown comfort liner attachment point, taking note of how the crown plate attachment slips into place between the shell and EPS liner.



VENTING SYSTEM

To activate the venting system simply slide the inner vent trigger shown in Fig #1a to the open position. To activate the forehead vents in Fig #2a, slide the vents open by pushing them towards the rear.





CARE AND CLEANING

Let's face it, Icon® helmets look cool and you want to keep them that way. We've found the following methods work really well to keep our helmets looking sharp and ready to roll. Remember, never use gas, pre-mix, carb cleaner, brake cleaner or any other random unlabeled spray can lying around the garage. Chemicals and harsh solvents can break down the materials in your helmet; it's like using brake cleaner to polish your plastics—don't do it!

INTERIOR CLEANING

1. Remove interior lining as shown on page 12.
2. Soak your interior in a mild solution of baby shampoo.
3. Rinse in clean water several times until all soap is gone.
4. Let interior air dry and replace accordingly.

* **Never machine wash or dry your helmet interior.**

SHIELD CLEANING

Your helmet is equipped with a scratch resistant fog free shield. Common household cleaners such as glass cleaners, surface cleaners, and furniture polishes, can leave behind unwanted residues, or in some extreme cases damage the shield itself. It is our recommendation the same steps outlined above for cleaning the exterior of your helmet should be applied to cleaning the exterior of your shield. Use no cleaners or detergents on the inside of your shield. Using anything other than a clean soft cloth, micro fiber cloth, or the bag supplied with your helmet, will ruin or reduce the effectiveness of the fog free coating.

STORAGE

It is a good idea to protect your helmet if it is stored for a period of time. Store your helmet inside the helmet bag we have provided in a secure, dry place out of direct exposure to sunlight.

EXTERIOR CLEANING (GLOSS HELMETS)

1. Lay a warm, wet, cloth towel on the exterior of the helmet for at least 5 minutes to soften dried on bugs. (Don't skip this step!)
2. Using a fresh, wet, clean cloth and mild dish soap wipe down the exterior to get rid of road grime and softened bug guts.
3. Use another fresh dry cloth towel to dry the helmet and get rid of any water spots.

EXTERIOR CLEANING (RUBATONE™ HELMETS)

1. Lay a warm, wet, cloth towel on the exterior of the helmet for at least 5 minutes to soften dried on bugs.
2. Remove the now softened bugs and road grime with a light blotting action. For this use the soft part of your helmet bag provided or a clean microfiber cloth.

* **Never rub aggressively with anything on the Rubatone™ or you can ruin the finish.**

EXTERIOR POLISHING

1. For gloss helmet finishes, use spray automotive wax that is specifically designed for cars with a clear coat. (Available at any automotive store.)
2. For matte finishes, you know better than to polish a matte finish don't you?



ADVISORY

ONE IMPACT RULE - ANY HELMET THAT HAS SUSTAINED AN IMPACT SHOULD BE REPLACED.: Helmets are designed to absorb only one impact. The helmet is designed to absorb some shock by partial destruction of the shell and liner. After your helmet has endured any impact, the impact absorption liner portion of your helmet will have dispersed the energy from that impact, thus rendering the liner compacted and, therefore, compromised. This damage may not be visible. Even if there is no VISIBLE damage to the shell, the helmet's usefulness is expired after one impact. A helmet that has experienced an impact should be destroyed and replaced, even if it is apparently undamaged.

HEARING: Wearing any helmet reduces the wearer's ability to hear. A wearer needs to be aware of this audible reduction and their surroundings. Not being aware this audible reduction may lead to an accident that could result in injury or death.

OBSELESCENCE AND HELMET DISPOSAL: A helmet has a limited lifespan in use and should be replaced when it shows obvious signs of wear, e.g. change of fit, cracks, rust or fraying or other signs of normal "wear and tear" that can contribute to helmet degradation.

REPLACEMENT RECOMMENDATION: The five-year helmet replacement recommendation is based on a consensus of the majority of helmet manufacturers. Glues, resins and other materials used in helmet production can affect liner materials over time. Hair oils, body fluids and cosmetics, as well as normal "wear and tear" also contribute to helmet liner degradation. Additionally, petroleum-based products present in cleaners, paints, fuels, and other commonly encountered materials may break down materials used in the construction of many helmets, possibly compromising performance. Experience indicates that helmet standards are revised every five years. This, coupled with advances in materials, designs and production methods suggest that it is in the rider's best interest to replace his/her every five years at a minimum. If you buy a new helmet, destroy the old one to ensure it cannot be reused. Do not sell or give away your old helmet, even if it has not been damaged. Over time, the protective layer in the helmet will adjust to the contours of your head. If someone else uses this helmet it will not provide him or her with as much protection.

WAIVER AND RELEASE BY OWNER: No personal protective equipment is able to safeguard against all injuries in the event of an accident or fall from a motorcycle. No personal protective equipment can offer complete protection against impact or abrasion as a result of an accident or fall from a motorcycle. Motorcycling is inherently dangerous in nature and use of this helmet cannot prevent injury or death. Even a low speed accident may result in serious injury or death. When using this helmet, the user assumes all risk associated with this activity, which may cause injury or death. The user hereby waives all claims against Icon® Motosports (a division of Lemans Corporation), Lemans Corporation and J-TECH Corp. for death or injury to his or her person and hereby covenants to not sue for any claims arising as a result of injury or death while using Icon Motosports products.

