



PARTS LIST

QTY.	DESCRIPTION
1	Speedometer Cowl
1	Alcohol Wipe



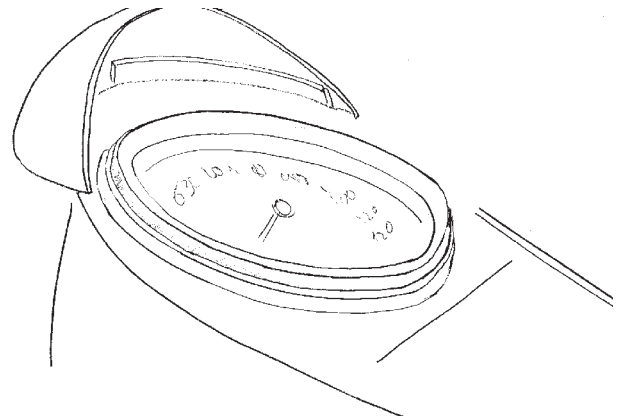
None Required

PREPARATION

Place the motorcycle securely on its side stand. Thoroughly clean the speedometer area before installing the Speedometer Cowl. **Do not use polishes or silicone.**

INSTALLATION OF GLARESTOPPER™

- Using an Alcohol Wipe, clean the chrome ring around the speedometer.
- Before you remove tape liner**, determine the best mounting position by placing the Speedometer Cowl on outside speedometer ring.
- Remove the red backing from the adhesive on the inside of the Speedometer Cowl.
- Position the Speedometer Cowl on the speedometer ring. Adjust the position if required.
- When the Speedometer Cowl is satisfactorily positioned, squeeze the Speedometer Cowl against the speedometer ring.
- Let adhesive tape set-up 4-6 hours before using motorcycle.



MAINTENANCE

This product can be maintained with a cleaner or polish suitable for chrome.