



INSTALLATION INSTRUCTIONS
 Cruiseline Chrome Saddlebag Kit SBC016 and
 Kit SB016 for Honda® VT750 C2 07~
*If mounting with Paladin Backrest P9BR014, Bag #955 is
 required in addition to this hardware.*

Please read and understand these instructions completely before installation to avoid any possible injury to yourself or damage to your motorcycle and / or accessory.

Report any missing parts directly to National Cycle, Inc. There is important code information located on the end panel of box that will be necessary when reporting missing parts.


DEALER: These instructions contain important information for future reference and must be given to the customer.

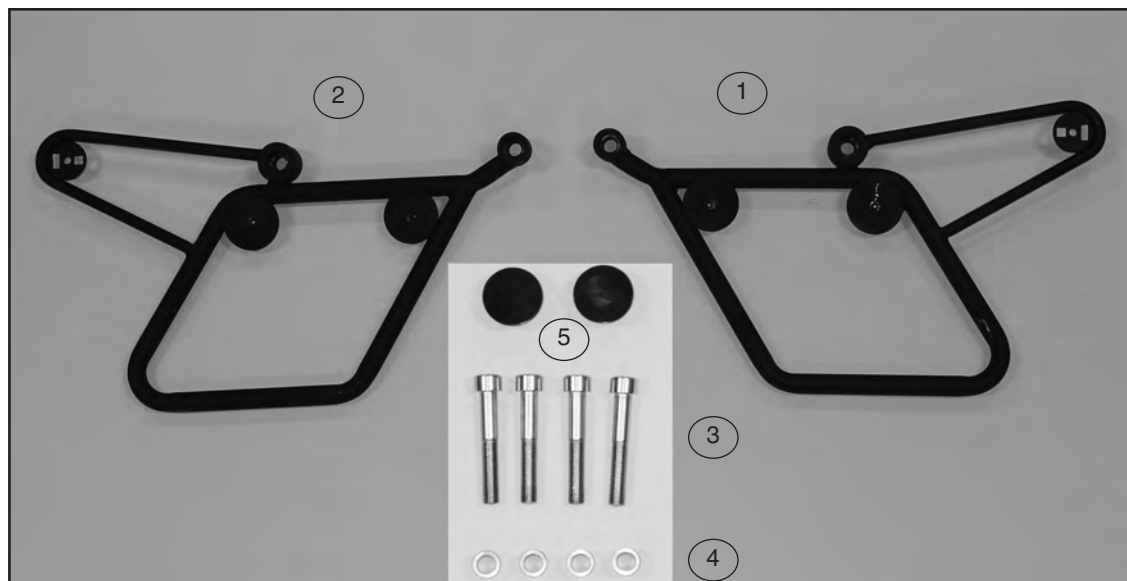
Parts List For Kit SB016, Black Frame


<u>Index</u>	<u>Part No.</u>	<u>Description</u>	<u>Qty.</u>
1	34-341130-000	Frame Bracket Black, Left	1
2	34-341131-000	Frame Bracket Black, Right	1
Bag 617			
3	51-515966-000	Screw HS, M10-1.25 x 65	4
4	34-342832-000	Spacer .514 Length	4
5	42-425020-000	Insert, Turn signal, Black	2

Tools Needed:

- Hex Key 6mm and 8mm
- Open End Wrench, 10mm and 11mm
- Small Screw Driver

 Left and right side of motorcycle is determined from rider's perspective, while on the motorcycle.



 The stock turn signals will relocate from the fender frame to National Cycle's saddlebag frame. The turn signal wiring will be re-routed through the fender frame "C" channel as it was originally. Once this is done, the saddlebag frames are connected to the fender frame requiring a second person to support the unit while installation is completed, approximately 10 minutes.

Attention



Special notes and cautionary measures which can prevent damage to the accessory or motorcycle.

Note:



Tips for facilitation of operation, control and adjustment, as well as maintenance work.

REMOVAL OF PARTS AND PREPARATION

1. Remove seat. (10mm wrench and 6mm hex key) **Figure 1**

2. Disconnect turn signals and tail light (**Small screw driver**) **Figure 2**


White = Taillight

Orange = Left turn signal

Blue = Right turn signal

3. Remove left and right side fender rail bolts. **Figure 3**

4. Remove fender. **Figure 4**

 Pry gently on fender to “pop” bushings. **Figure 5**

5. Remove fender frame from fender. (Wires will come out.) **Figure 6**



Figure 1

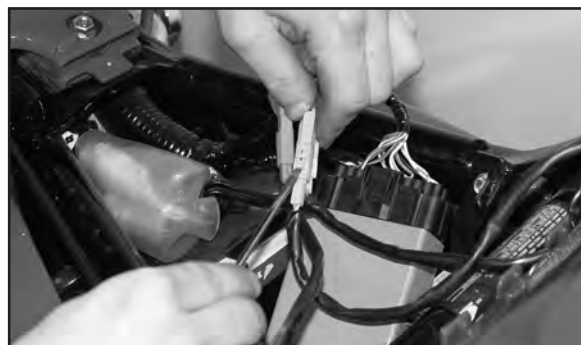


Figure 2



Figure 3




Figure 4



Figure 5



Figure 6

 Note the placement of wires as you remove them from fender frame “C” channel. You will need to re-route them after turnsignals are relocated!

6. Remove turn signals from fender frame. (**6mm Hex Key**) **Figure 7**

7. Carefully remove left and right turn signal wires from “C” channel on frame. **Figure 8**

INSTALLATION

1. Insert supplied plugs into turn signal holes and tighten. (**11mm Wrench**) **Figures 9 and 10**



Figure 7



Figure 8



Figure 9



Figure 10

INSTALLATION CONTINUED

2. Insert end of left turn signal wire (orange end) through the rectangular opening in left saddlebag frame as indicated by white arrow. Attach turn signal to left saddlebag frame using stock hardware. The other rectangular hole is used as a rotational stop for turn signal stem. **(6mm Hex Key) Figure 11**

3. Repeat for right frame.

3. Route turn signal wires into "C" channel of fender frame as originally installed except that:
the left turn signal wire skips last hole to allow more length. **Figure 12**

4. Re-install fender over fender frame, plastic will "pop" onto bushings. **Figure 13**

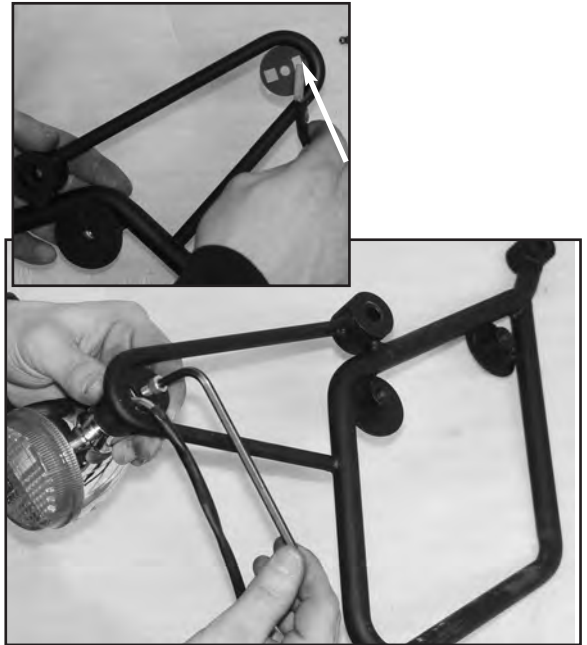


Figure 11



Figure 12



Figure 13

INSTALLATION of FRAME ASSEMBLY TO MOTORCYCLE

1. Remove slack from wires you will need the length to reconnect.
2. Recruit a helper to carry assembly to motorcycle. While one person holds assembly over rear wheel the other person brings wires forward. **Figure 14**
3. Use a M10 x 75mm bolt and one spacer to loosely attach left side bracket through fender rail, fender and into frame on motorcycle. Leave loose until all four bolts are installed. **(8mm Hex Key) Figure 15 and 16**
4. Repeat procedure on right side of motorcycle.
5. Torque 10mm bolts to: 45Nm, 43 ft. lbs. **(Torque Wrench)**
6. Reconnect turn signal left and right and tail light wires. Test turnsignals and brake light. Fix connections if necessary.
7. Reinstall seat.



Figure 14



Figure 15



Figure 16

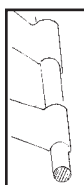
⚠ WARNING

Not to exceed 11 lbs (5kg) weight per bag. Do not exceed 80 mph (129 kph) when saddlebags are mounted.

On some motorcycles, additional accessories can reduce a motorcycle's stability and safe operating speed. Never ride a motorcycle that exhibits any unsafe handling characteristics. Remove all accessories and cargo at once. Have your dealer diagnose and solve the problem before remounting your accessories.

INSTALLATION OF SADDLE BAG TO FRAME

Rest the stainless steel clips attached to the outside of the bag to the lower section of the frame. Engage the quarter turn fastener to the frame. Push in and turn clockwise one quarter turn. There will be a slight spring pressure against the fastener, turn until it stops. Grab the side of the bag, wiggle it. The bag should be firmly set. If fastener is loose, repeat installation of bag to frame.

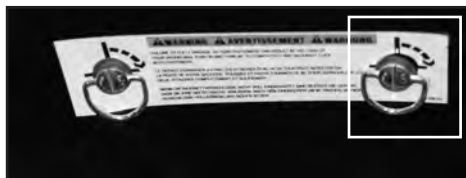


Rest clip on lower section of frame

Saddlebag Care: Wash with a mild soap or detergent and warm water. Use a soft cloth. To remove tar use naphtha or turpentine.

Painting: Lightly sand the surface with 600 grit sandpaper and spray lacquer, urethane or other paint.

Replacement Parts: Contact National Cycle, Inc



Turn Fastener clockwise one quarter turn.

INSTALLATION PROCEDURE WHEN INSTALLING CRUISELINER SADDLEBAGS WITH PALADIN® BACKREST P9BR014

1. Follow installation procedure through page 5, step 2 of this manual.

2. Use the parts list and diagram A to properly assemble the hardware for installation of the saddlebag frame along with Paladin mount brackets P9BR014.

PARTS REFERENCE FOR THIS AREA OF INSTRUCTION

Index	Part No.	Description
1	34-341131-000	Frame Bracket Black, Right

Parts Contained in Bag #955. You must have this bag to complete installation of the saddlebags with Paladin back rest.

2	51-515732-000	Screw HS, M8 x 30	2
3	51-515976-000	Screw HS, M10 x 75	2
4	49-490451-000	Washer, Flat	2

Parts Contained in Paladin Bag #924

5	44-441901-000	Cushion Urethane	2
6	34-340519-000	Spool, Rear	2
7	34-350714-000	Standoff, Hex	2
8	34-340524-000	Spool, Front	2
9	34-342832-000	Spacer, Front	2

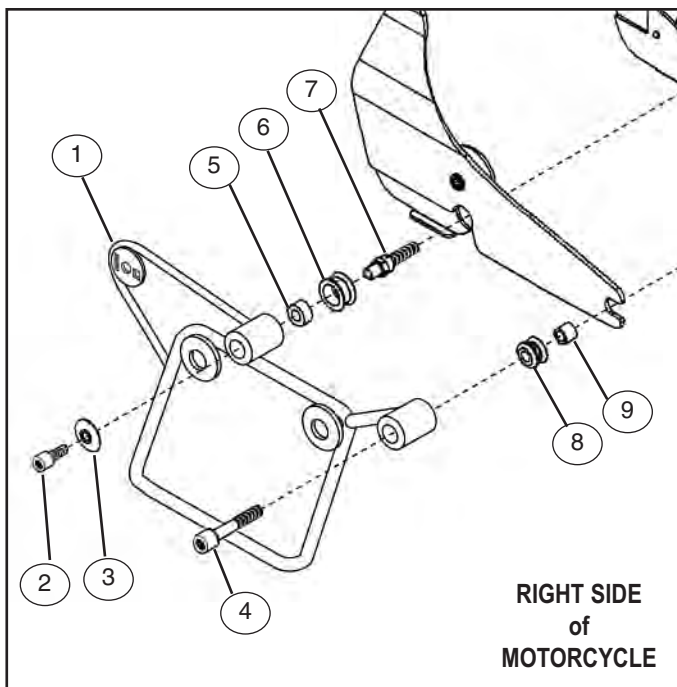


Diagram A