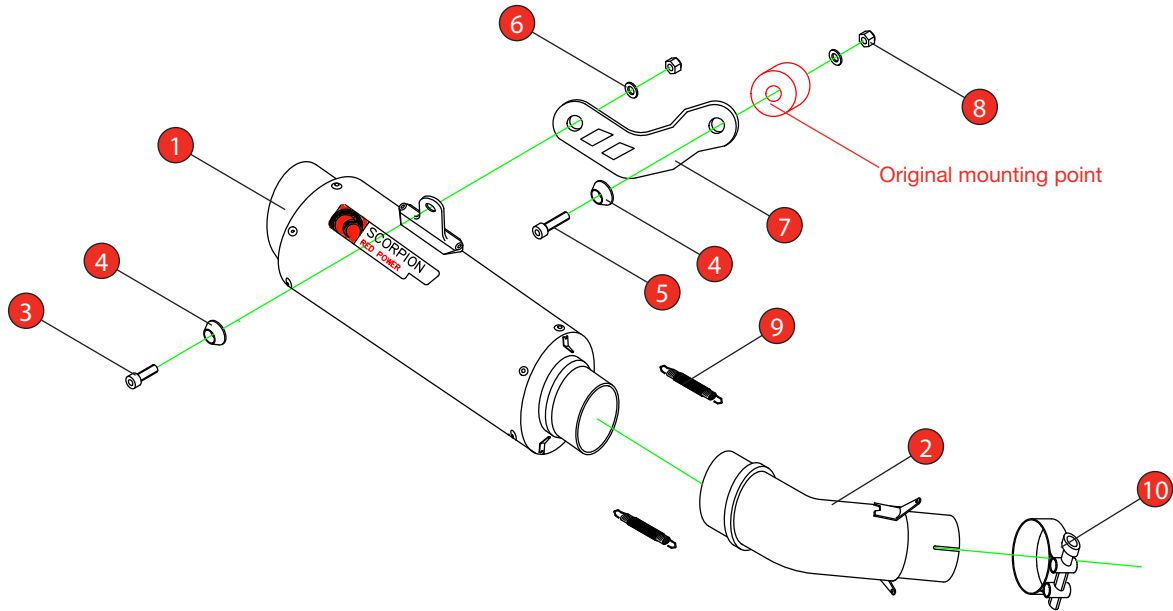


Bike	Kawasaki Ninja 400	Part No.	KA-1015
Year	2018-Current	Fit Kit	Z039.10631
Notes	Where not supplied use original fittings	dB Killer	SCEXDBK44 - (Type AD)

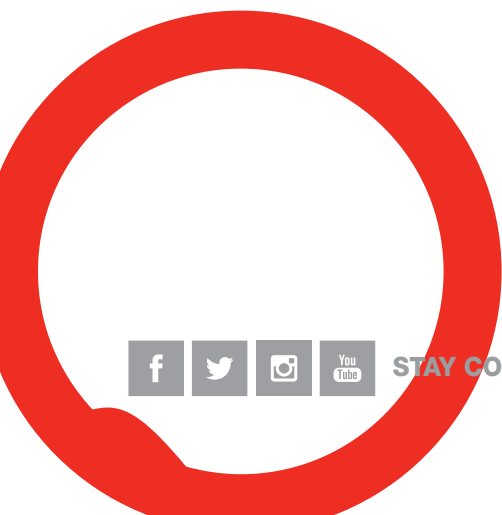
Estimated Fitting Time: 60 Minutes



NO.	PART NO.	DESCRIPTION	QTY
1	SC432	RP-1 GP Silencer	1
2	CP993	Connecting Pipe	1
Fit Kit - Z039.10631			
3	Z017.10074	M8 x 30mm Cap Head Bolt	1
4	Z026.20068	Alloy Bolt Finisher	2
5	Z017.10076	M8 x 40mm Cap Head Bolt	1
6	Z017.10831	M8 x 17mm Washer	2
7	Z015.31027	Mounting Bracket	1
8	Z017.10062	M8 Nyloc Nut	2
9	Z028.10030	Rubber Coated Spring	2
10	Z016.10008	43-47mm Clamp	1

CLASSIFICATION	Closed Circuit Product
HOMOLOGATED	No
DATE	13/03/2023
ISSUE	04
AUTHORISED	S SHIPLEY

NOTE: ENSURE SCORPION SYSTEM IS CLEAR OF MOVING PARTS AND ALL ORIGINAL FUNCTIONS WORK CORRECTLY.



STAY CONNECTED TO RED POWER.

Bike	Kawasaki Ninja 400	Part No.	KA-1015
Year	2018-Current	Fit Kit	Z039.10631
Notes	Where not supplied use original fittings	dB Killer	SCEXDBK44 - (Type AD)

Estimated Fitting Time: 60 Minutes



A) Remove original exhaust from bike, taking care to keep all original components in a safe place.

B) Refit Scorpion exhaust as per line diagram above.

C) When fitted take bike for a short ride to ensure all functions are correct.

D) When bike & exhaust are cool enough check all nuts and bolts are still secure.

Thank you for purchasing your Scorpion Silencer.

Care of your exhaust: Please refrain from cleaning silencer with heavy solvents or abrasives!

Vielen Dank Für den kauf eines Scorpion Schalldampfers! Pflegehinweis: Bitte verwenden Sie niemals Scheuermittel oder aggressive Reiniger zur Pflege Ihres Auspuffes!

Merci d'avoir choisi un echappement Scorpion.

Entretien de votre silencieux: Ne pas utiliser de solvants ou de produits abrasifs!

Muchas gracias por adquirir un Silencioso Scorpion. Le recomendamos no limpiar el silencioso con productos abrasivos o aquellos que contengan disolventes.



STAY CONNECTED TO RED POWER.