



SUPER HEAD 4VALVE

Instruction Manual Decompression Camshaft

KSR110 SUPER HEAD 4VALVE ONLY

0 1 0 8 0 1 2 8 (10/15D) 0 1 0 8 0 1 3 0 (20/25D)
 0 1 0 8 0 1 2 9 (15/20D) 0 1 0 8 0 1 3 1 (25/30D)

Thank you for purchasing one of our TAKEGAWA products.

This camshaft is specialized to ensure maximum potential of our Super Head.

This auto-decompression allows easy engine starting.

Make sure you have a clear understanding of all the directions and please strictly follow the instruction to install and use the kit.

Please note: Illustrations and photos may vary from actual hardware.

CAUTION The following show the envisioned possibility of injuries to human bodies or property damage as a result of disregarding the following cautions.

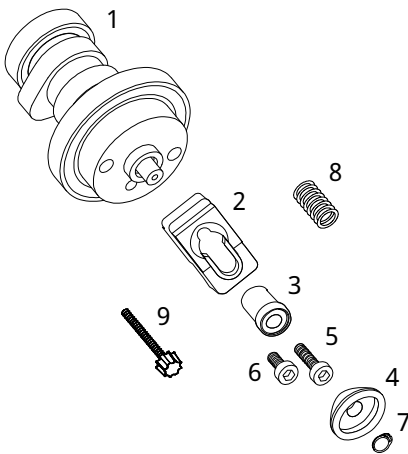
- Prepare appropriate tools and work properly to avoid the breakage of parts or injuries.
- Always check a tachometer and ride at below the designated engine revolution speed.
(Over revving not only adversely affects the engine but also causes the engine to break down.)
- Please do checking and maintenance periodically. (Failure to check or to perform maintenance of the engine may lead to engine breakage.)
- If you find damaged parts when checking or performing maintenance of your motorcycle, replace them with new ones.
(The continued use of the damaged parts will result in the engine failure.)

WARNING The following show the envisioned possibility of human death or serious injuries to human bodies as a result of disregarding the following cautions.

- When you notice something abnormal with your motorcycle, stop riding immediately and park your motorcycle in a safe place to avoid an accident.
- Always start the engine in a well-ventilated place, and do not turn on the engine in an airtight place.
(Otherwise, you will suffer from carbon monoxide poisoning.)
- Make sure that your motorcycle is secure on flat, level ground to ensure safe work.
(If your motorcycle is kept standing in a precarious condition, the engine could overturn and injure you while you are working.)

Please be informed that, mainly because of improvement in performance, design changes, and cost increase, the part specifications and prices are subject to change without prior notice.

This manual should be retained for future reference.



No.	Part name	Qty	Repair part item No.	in packs of
1	Camshaft COMP.	1	10/15D 14100-KSS-T00	1
			15/20D 14100-KSS-T10	1
			20/25D 14100-KSS-T30	1
			25/305D 14100-KSS-T40	1
2	Weight	1	14103-KL3-T00	1
3	Collar	1	14106-KL3-T00	1
4	Plate	1	14104-KL3-T00	1
5	Cap screw. 6 x 20	1	00-00-0043	10
6	Cap screw. 6 x 12	1	00-00-0116	6
7	Snap ring, 6 mm	5	00-01-0255	5
8	Spring	1	00-01-0092	2
9	Thumb screw, 3 x 28	1	00-01-0254	2

Please order repair parts with the Repair Part Item No.
 Without the repair part item No., we may not be able to provide the correct parts.
 Some parts are only available as a set.
 Please order them with the set number.

Please select the appropriate cam shaft to suit the use.

Cautions for use:

When installing, please strictly follow the "Installation procedures" in the instruction manual for Super head 4 VALVE.

Those without sufficient knowledge or skill are required not to do the work.

Carry out periodic maintenance, referring to the owner's manual for Super Head 4 VALVE.

SPECIAL PARTS TAKEGAWA Co.,Ltd.
 3-5-16 Nishikiorihigashi Tondabayashi Osaka Japan TEL:81-721-25-1357 FAX:81-721-24-5059 URL:http://www.takegawa.co.jp