



Instruction Manual for Rear-Dumper hub Kit

Item No. : 06 08 1755
Fits : Monkey & Gorilla

Thank you for purchasing one of our TAKEGAWA's products.

The engine, high-powered by bore up and other means, places too much strain on the transmission and chain. The rear hub incorporated with the dumper, however, absorbs the shock felt at the time of back torque, resulting in the less strains on the transmission or chain.

We request you to carefully read this instruction manual to understand the instructions before using the products.

Please be informed that in some cases the illustrations and photos may be different from the actual hardware.

Please read the following instructions before installation.

Caution The following show the envisioned possibility of injuries to human bodies or property damage as a result of disregarding the following cautions.

Be sure to do the work when the engine and muffler are cold. (Otherwise, you will get burned.)

Tighten to a specified torque using a torque wrench. (Otherwise, improper tightening may cause the bolts or nuts to get damaged or come off.)

As some products and frames have sharp-pointed or protruding portions, please work with your hands protected. (Otherwise, you will suffer injuries.)

Before riding, always check every hardware for slack in parts like screws. If you find slack ones, screw them securely up to the specified torque.

(Or, improper torque may cause parts to come off.)

Be careful the brake fluid does not contact your skin. After work, wash your hands thoroughly with water. Otherwise, you will have a rough skin.

Please handle the brake fluid with great care, because the fluid, if spilled on painted surfaces, resin parts, or rubber products, will deteriorate or damage these parts. If the fluid is spilled on them, wash them immediately with water. Otherwise, the fluid spill will cause the deterioration or damage of these parts.

Warning The following show the envisioned possibility of human death or serious injuries to human bodies as a result of disregarding the following warnings.

Installation of this Kit requires processing. So, when working, please take precautions to protect your eyes, face and hands for safety's sake.

(If metal fragments or others get in your eyes, this may cause your vision loss.)

When you notice something unusual with your motorcycle while riding down a road, immediately stop riding. (Otherwise, accidents may take place.)

Keep plastic bags for packing the products out of children's reach, or discard them. (If children get them on, there will be a danger of their suffocating.)

Before starting the work, secure your motorcycle firmly on level ground for safety's sake.

(Otherwise, your motorcycle could overturn and injure you while you are working.)

Do not get oil or grease on the brake disk rotor or brake pad. If oil &/or grease adhere to these parts, change the brake pad and degrease the brake disk rotor. Otherwise, oil or grease adherence may lead to accidents.

We recommend you to get the brake installed by a skilled mechanic at facilities with special instruments and tools. Otherwise, the wrong installation may cause accidents.

Carry out inspection and maintenance of your motorcycle correctly according to the instructions and guidelines in the instruction and service manuals. (Improper inspection or maintenance could lead to accidents.)

If you find damaged parts when inspecting or performing maintenance of your motorcycle, do not use these parts any longer, and replace them with new ones. (The continued use of these damaged parts as they are could lead to accidents.)

We listed here the cautions and warnings for users to use these parts properly and also to prevent dangers and damages to users themselves and other people as well. All these are the envisioned dangers and damages which are feared to take place from wrong handling. So, please do follow these instructions for safety's sake.

Please be informed that, mainly because of improvement in performance, design changes, and cost increase, the part specifications and prices are subject to change without prior notice.

When ordering repair parts, please quote Item No above or reference Nos in the figures in this Manual. Should you have any questions in ordering repair parts, please contact your local motorcycle dealer.

This manual should be retained for future reference.

We do not take any responsibility for any accident or damage whatsoever arising from the use of the products not in conformity with the instructions in this Manual.

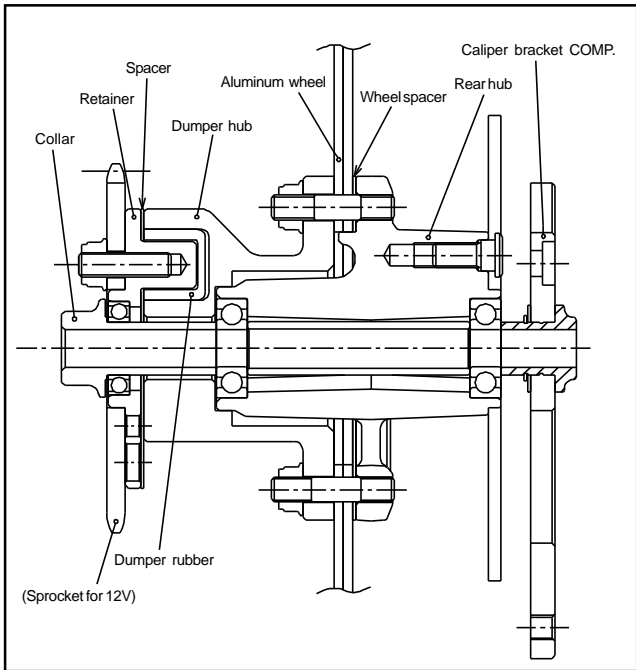
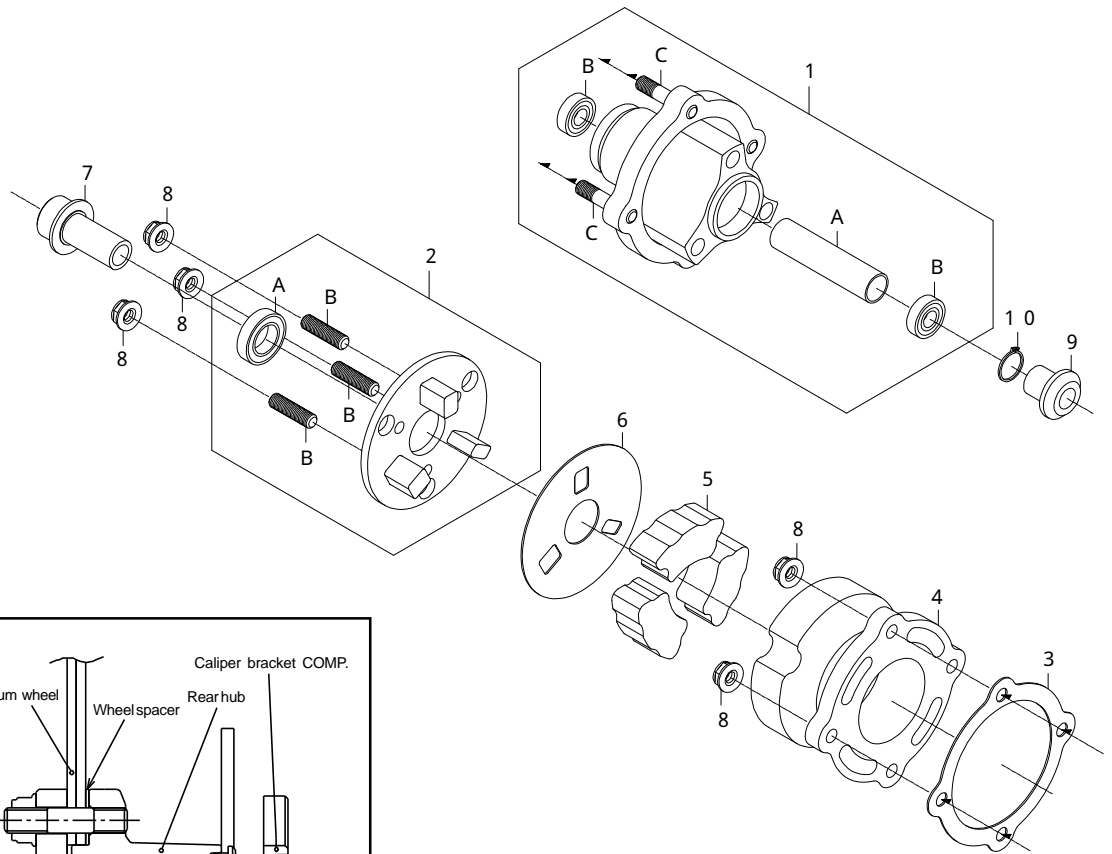
We shall be held free from any responsibility or compensation whatsoever for any glitch in the parts other than ours if the glitch takes place after the installation and use of this Kit.

You are kindly requested not to contact us about the combination of our products with other manufacturers'.

This Kit is designed and developed for exclusive use in motorcycles equipped with our TAKEGAWA's long swing arm.

For the installation of this Kit, our TAKEGAWA's 10-inch wheels of Item No. 06-09-033, -054, -012, -034 or -056 are needed.

A driven sprocket for a 12V motorcycle is required.



No.	Part Name	Qty	Repair Part Item No.	in packs of
1	Rear wheel hub assembly	1	44604-181-T50-C	1
1-A	Distance collar	(1)	44621-181-T00	1
1-B	Bearing 6201LLB	(2)	00-00-0077	1
1-C	Stud bolt	(4)	00-00-0078	1
2	Retainer COMP.	1	42602-181-T00-C	1
2-A	Bearing 6903LLB	(1)	00-00-0035	1
2-B	Stud bolt	(3)	00-00-0079	1
3	Wheel spacer (1 mm)	1	06-09-1306	1
4	Dumper hub	1	42601-181-T00	1
5	Dumper rubber	3	06-08-0004	3
6	Spacer	1	42604-181-T00	1
7	Collar	1	42603-181-T00	1
8	Lock nut, 8 mm	7	00-00-0080	5
9	Bracket sleeve	1	43113-GEF-T00	1
10	Snap ring, 18 mm	1	00-00-0326	4

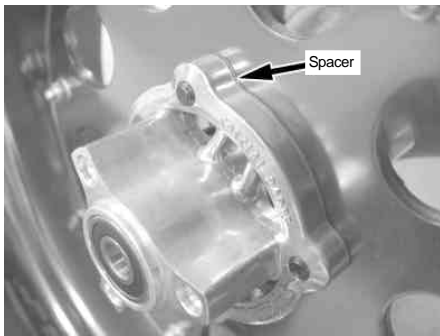
Please note that in ordering repair parts, be sure to quote the Repair Part Item No. Otherwise, we may not be able to accept your orders. There are some parts, however, for which we are not in a position to accept your order in just the quantity to be used. In this case, please take them in the quantity packed.

Please check the kit contents, first.
 ΔNOTE: Be sure to prepare tools to suit your work.
 ΔNOTE: Check that the engine and muffler are cool.
 ΔWARNING: Make sure that the bike is secure on level ground.



If the swing arm, installed on your motorcycle, is a standard type, cut off the panel stopper on the axle holder.

ΔWarning: Be sure to wear protective materials for the protection of your eyes and hands during your work.



Sandwiching the wheel between wheel hub assembly and dumper hub, tighten them, loosely for now, with a supplied lock nut.
 (Allowable board thickness: 7 to 7.3 mm)
 In the case of using a 10inch 2.5J aluminum wheel of Item No. 06-09-033 / 054:
 Place the supplied spacer 1 between wheel hub assembly and wheel.
 The air valve should face the sprocket.
 In the case of using a tubeless 10inch aluminum wheel of Item No. 06-09-012:
 Place the supplied spacer 1 between wheel hub assembly and wheel.
 The air valve should face the disk rotor.
 In the case of using a 10inch wide aluminum wheel of Item No. 06-09-034 / 056:
 There is no need to use the spacer.
 The air valve should face the sprocket.



Install the caliper to the disk rotor.
 Install the disk rotor.

ΔNOTE: Be sure to always follow the specified torque.

Torque: 40 N · m (4.0 kgf · m)

Apply thread lock cement to the thread of the bolt.
 In the case of using a stock caliper bracket as it is:



Change the sleeve of the caliper bracket with the supplied one.



Install and tighten the caliper to the caliper bracket with a flat head screw to the specified torque.

ΔNOTE: Be sure to always follow the specified torque.

Torque: 25 N · m (2.5 kgf · m)

In the case of changing the caliper bracket: (In this case, a caliper bracket COMP of 43110-GEF-T00 is additionally needed.)



Install and tighten the caliper to a caliper bracket with an M8x12 socket cap screw to the specified torque.

ΔNOTE: Be sure to always follow the specified torque.

Torque: 25 N · m (2.5 kgf · m)

Apply thread lock cement to the thread of the bolt.



Tighten the loosely-tightened lock nut to the specified torque.

ΔNOTE: Be sure to always follow the specified torque.

Torque: 27 N · m (2.7 kgf · m)



Install and tighten, to the specified torque, the driven sprocket to the retainer COMP. with the supplied lock nut, and install the collar.

ΔNOTE: Be sure to always follow the specified torque.

Torque: 30 ~ 36 N · m

(3.0 ~ 3.6 kgf · m)

Attach a dumper rubber to the dumper hub. And put the spacer between the dumper hub and retainer, and install the retainer.

Fit the axle shaft into the swing arm loosely for now.

Apply a thin coat of grease to the axle shaft.

Please refer to the Disk Brake Kit Instruction Manual for the installation procedures after this stage.

SPECIAL PARTS TAKEGAWA Co.,Ltd.

3-5-16 Nishikiorihigashi Tondabayashi
 Osaka Japan

TEL : 81-721-25-1357 FAX : 81-721-24-5059

URL : <http://www.takegawa.co.jp>