



Instruction Manual:Steering Set for 30 Upright Front Fork

Item No.	: 0 6 0 1 0 7 1 0
Fits	: Monkey and Gorilla
Frame Nos	: Z50J-1300017 ~

- Thank you for purchasing one of our TAKEGAWA's products. Please strictly follow the following instructions in installing and using the Set.
- Before installing the Set, please be sure to check the Set contents. Should you have any questions about the Set, please contact your local motorcycle.

Please note that, in some cases, the illustrations and photos may vary from the actual hardware.

Safety Precautions for Use

- This product is for use only in 10inch motorcycle.For installation of this product, either TAKEGAWA's wheels (06-09-033 or -054) for motorcycles equipped with TAKEGAWA's 10" rear drum brakes is required.
Additionally, as for a swing arm, use either a 12cm-long or 16cm-long swing arm, and install a rear shock absorber which fits the installed swing arm.
- Do not get dust or water in the brake fluid when adding the fluid, or do not mix different brands of fluid to prevent chemical change.
- NEVER let the brake fluid adhere to the paintwork, plastics and rubber parts, as the fluid damages them.



CAUTION

The following show the envisioned possibility of injuries to human bodies and property damage as a result of disregarding the following cautions.

- Make sure before starting the installation that the motorcycle is secure on level ground.
- Always use a torque wrench to screw bolts and nuts tight and securely to the specified torque.
(Otherwise, these parts may get damaged or fall off, resulting in accidents.)
- Do the installation with right tools.
- Please take note that a top bolt may come flying, sprung by a fork spring when unfastening a fork top bolt.
- As some products and frames have sharp edges or protruding portions, please work with your hands protected.
(Otherwise, you will suffer injuries.)
- Work with care so the brake fluid will not get on your skin. After the work, rinse your hands thoroughly with plenty of water.
(Otherwise, your hands may get rough and dry.)
- Work with utmost care because the brake fluid will deteriorate or damage the painted surface, resin components, or rubber products if the fluid adheres to them. If the fluid adheres, rinse the fluid-adhered portions with water without any loss of time.
(Otherwise, this may cause the deterioration or damage of the parts.)



WARNING

The following show the envisioned possibility of human death or serious injuries to human bodies as a result of disregarding the following warnings.

- Those who are technically unskilled or inexperienced are required not to do the work.
(Improper installation because of insufficient skill or knowledge could lead to parts breakage and subsequently to accidents.)
- Before riding, be sure to check every section for slack in parts like screws, and oil leak. When you notice something abnormal with your motorcycle while riding, immediately stop riding and park your motorcycle in a safe place to check what has gone wrong.
(Otherwise, the abnormality could lead to accidents.)
- Use only the specified brand of brake fluid. Do not mix different types of fluid, as they are not compatible with each other.
(The blended use of fluid may cause technical troubles or chemical change.)
- Do not get a brake disc rotor or brake pad oil-stained. Replace the oil-stained brake pad with a new one, and degrease the oil-stained brake disc rotor. (Otherwise, these oil-stained parts may cause accidents.)
- We recommend that the brake be installed by a qualified motorcycle technician at a well-equipped facility. (Otherwise, accidents may take place.)

The following TAKEGAWA-made parts are needed to change the front brake to a disk brake through the use of this product.

A mirror with a 10mm thread (in packs of one)	
Oval slide-type mirror	(06-01-110)
NC31-type mirror	(06-01-111)
Square sliding-type mirror	(06-01-112)
Mini mirror (for right-hand only)	(06-01-113)
Mirror adaptor (in packs of two)	(06-01-100)

This part is needed only when a genuine mirror and a mirror with an 8mm thread are used.

If the front brake is changed to a hydraulic disk, it is necessary to remove a standard throttle housing (a brake integrated with a lever) because a front master cylinder needs to be installed. Therefore, either our TAKEGAWA-made high throttle set or a Honda's genuine part is needed.

Our products:

High throttle set (810mm-long cable)	(09-02-0221)
High throttle set (700mm-long cable)	(09-02-021)

These products are for use with our TAKEGAWA's Carburetor Kit, excluding KEIHIN PC18 Carburetor.

HONDA's genuine parts

Throttle housing (1 piece)	(53168-166-000)
Throttle housing (1 piece)	(53167-GE4-000)
Pan screw, 5 x 22 (2 pieces)	(93500-05022-0G)

These parts are for use with stock carburetors and TAKEGAWA's KEIHIN PC18 Carburetor.

In the case of installing this Set to motorcycles with frame Nos Z50J-1300017 to 1510400, the following parts are additionally needed.

For a motorcycle with a centrifugal clutch:

Combination switch assembly	(02-01-015)
-----------------------------	-------------

For a motorcycle with a manual clutch:

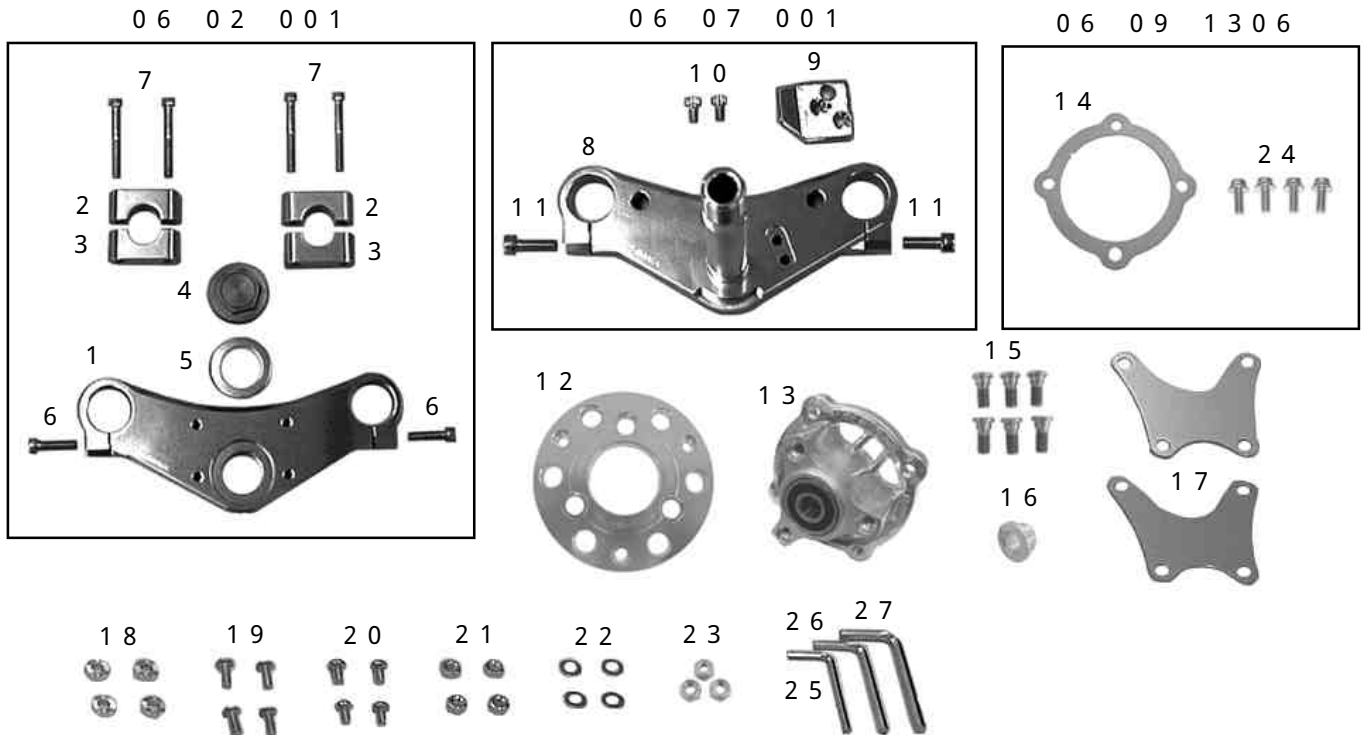
Clutch lever and combination switch assembly	(02-01-016)
--	-------------

Please be informed that, mainly because of improvement in performance, design changes, and cost increase, the product specifications and prices are subject to change without prior notice.

We shall be held free from any kind of warranty whatsoever of products other than this product if the glitch takes place on the other products than this one after the installation and use of this product.

This manual should be retained for future reference.

Kit includes:



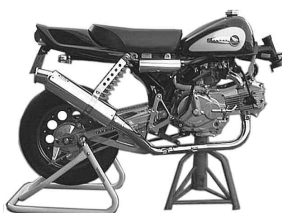
No.	Part Name	Qty	Repair Part Item No.	in packs of	No.	Part Name	Qty	Repair Part Item No.	in packs of
1	Fork top bridge	1			15	Disk bolt, 8 x 20	6	90105-165-T00	1
2	Upper handle holder	2	54411-165-T00	1	16	Front wheel hub collar	1	44313-181-T00	1
3	Lower handle holder	2	54412-165-T00	1	17	Front fender stay	2	61110-181-T00	1
4	Stem nut	1	54303-165-T00	1	18	Fender stay collar	4	61111-181-T00	1
5	Stem nut washer	1	90503-165-T00	1	19	Button head cap screw, 6 x 15	4	00-00-0132	4
6	Socket cap screw, 6 x 25	2	00-00-0089	10	20	Button head cap screw, 6 x 10	4	00-00-0092	5
7	Socket cap screw, 6 x 50	4	00-00-0044	3	21	Hex nut, 6 mm	4	00-00-0128	10
8	Steering stem COMP.	1	53201-181-T00A	1	22	Plain washer, 6 mm	4	00-00-0086	10
9	Steering lock bracket	1	53601-GEF-T00	1	23	Lock nut, M8	3	00-00-0182	4
10	Socket cap screw, 6 x 12	2	00-00-0116	6	24	Flange socket cap screw, 8 x 20	4	00-00-0238	4
11	Socket cap screw, 8 x 30	2	00-00-0184	2	25	Hex wrench, 4 mm	1		
12	Disk rotor spacer	1	45212-181-T00	1	26	Hex wrench, 5 mm	1		
13	Front wheel hub COMP.	1	44604-181-T00-C	1	27	Hex wrench, 6 mm	1		
14	Wheel spacer	1							

Please note that in ordering repair parts, be sure to quote the Repair Part Item No. Otherwise, we may not be able to accept your orders.

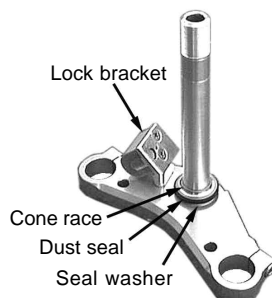
There are some parts, however, for which we are not in a position to accept your order in just the quantity to be used. In this case, please take them in the quantity packed.

~ Installation Instructions ~

1. Before starting the work, stand your motorcycle securely on a rear maintenance stand and secure the engine on a suitable pedestal.



2. From a stock stem shaft, detach a bottom cone race, dust seal, seal washer and handle lock, and attach them to a steering stem.



3. Thoroughly apply grease to a top and bottom cone races, and then attach steel balls to the cone race.

Before attaching the steel balls, wash it, and do not let dust into them after the washing.



- 4 . Attach the steering stem to the steering head, and then the top cone race and top thread, and handtighten the top thread as hard as possible.

Move the stem four to five times to the right and left. After the steel balls have fit in all right, then tighten the top thread to the specified torque.

Torque: 2 N · m (0.2 kgf · m)

Check that the steering stem moves smoothly without being shaky.



- 5 . Using a front maintenance stand, remove the pedestal under the engine. Attach the top bridge and put a washer, and loosely tighten the stem nut for now.

- 6 . Put the right and left front forks through holes in the stem and top bridge clamp, and tighten the split bolt on the stem to the specified torque.

Torque: 26 N · m (2.7 kgf · m)

Install the front forks so the right and left front forks protrude in the same length.

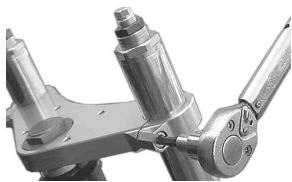
- 7 . Tighten the stem nut to the specified torque.

Torque: 59 N · m (6.0 kgf · m)



- 8 . Tighten the split bolt on the top bridge to the specified torque.

Torque: 15 N · m (1.5 kgf · m)



- 9 . Attach the disk rotor spacer to the front wheel hub with a supplied disk bolt, tightening it to the specified torque.

Torque: 25 N · m (2.5 kgf · m)



- 10 . Attach the disk rotor to the disk rotor spacer with the supplied disk bolt and lock nut, and tighten the disk rotor to the specified torque.

Torque: 25 N · m (2.5 kgf · m)



- 11 . Install loosely the front wheel hub onto a 10-inch aluminum wheel with flange cap screws.

In the case of using a standard offset wheel of 06-09-033 / 054

Place the supplied spacer between the front wheel hub and aluminum wheel.

Be careful to set the air valve to be on the left side when seen in the direction of travel.

- 12 . Attach the side collar and speedometer gearbox to the front-wheel hub, and then install the front wheel hub to the front fork. And tighten the axle nut to the specified torque.

Torque: 59 N · m (6.0 kgf · m)

Install a side collar with its smaller diameter tip to face the hub.

Prior to tightening the axle nut, adjust the location of the speedometer gearbox.



- 13 . Install the caliper to the front fork, and tighten the bolt to the specified torque.

Torque: 26 N · m (2.7 kgf · m)

When installing the caliper, the caliper and wheel interferes with each other. Therefore, loosen the bolt until there is no more interference between them.

Tighten the wheel-mounting bolt to the specified torque.

Torque: 25 N · m (2.5 kgf · m)



- 14 . Put a collar in between the front fender stay and bottom case, attach the 6x15 button head screw, and tighten it to the specified torque.

Torque: 10 N · m (1.0 kgf · m)



- 15 . Set the optional front fender in between the fender stays.

Put a 6x10 button head screw into the fender stay, and attach a plain washer and hex nut from the back of the fender to secure the screw. Holding tight the hex nut with a spanner, tighten the screw to the specified torque.

Torque: 7.8 N · m (0.8 kgf · m)

For the installation of the front fender, please refer to its instruction manual.



SPECIAL PARTS TAKEGAWA Co.,Ltd.

3-5-16 Nishikiorihigashi Tondabayashi
Osaka Japan

TEL : 81-721-25-1357 FAX : 81-721-24-5059

URL : <http://www.takegawa.co.jp>