



Instruction Manual for Initial Adjuster

- Thank you for purchasing one of our TAKEGAWA's products. Please strictly follow the following instructions in installing and using the products.
- Before fitting the products, please be sure to check the contents of the kit. Should you have any questions about the products, please kindly contact your dealer.

Please note that, in some cases, the illustrations and photos may vary from the actual hardware.

Item No. :	0 6 0 6 0 0 0 1	(Black-anodized)
	0 6 0 6 0 0 0 2	(Hard-anodized)
Fits :	Monkey	(Equipped with our 30)
	Ape50 / 100	(Equipped with our 06-02-006)
	XR50 / 100 Motard	(Equipped with our 06-02-006)
	NSF	
	NSF50 / 80	

Please read the following instructions before installation.

We do not take any responsibility for any accident or damage whatsoever arising from the use of the products not in conformity with the instructions in the manual. We shall be held free from any kind of warranty whatsoever of products other than this product if the glitch takes place on the other products than this one after the installation and use of this product.

You are kindly requested not to contact us about the combination of our products with other manufacturers'.

Note that the installation procedures of this initial adjuster vary depending upon on which motorcycle to install this product, Ape and XR50 / 100 Motard, or other motorcycle models.

Note that it is subject to using our full-clamp top bridge of 06-02-006 to use this initial adjuster on Ape or XR50 / 100 Motard.

If your motorcycle is Ape or XR50 / 100 Motard and if you are using our handle holder of 06-02-110 or -111, please see "When installing onto a motorcycle other than Ape or XR50 / 100 Motard."

Note that it is subject to using our 30 fork to use this initial adjuster on Monkey or Gorilla.



CAUTION

The following show the envisioned possibility of injuries to human bodies and property loss as a result of disregarding the following cautions.

- Make sure your motorcycle is secure on level ground. Otherwise, your motorcycle could overturn and injure you while you are working.
- Always use a torque wrench to screw bolts and nuts tight and securely to the specified torque.
(Improper torque could cause these parts to get damaged or fall off.)
- Prepare right tools for the work, and do the work in the proper and right way.
(Otherwise, improper work could cause breakage of parts or injuries to yourself.)
- As some products and frames have sharp-pointed or protruding portions, please work with your hands protected. (Otherwise, you will suffer injuries.)
- Before riding, always check every section for slack in parts like screws. If you find slack ones, screw them securely up to the specified torque.
(Or improper torque may cause parts to come off.)

Please be informed that, mainly because of improvement in performance, design changes, and cost increase, the product specifications and prices are subject to change without prior notice.

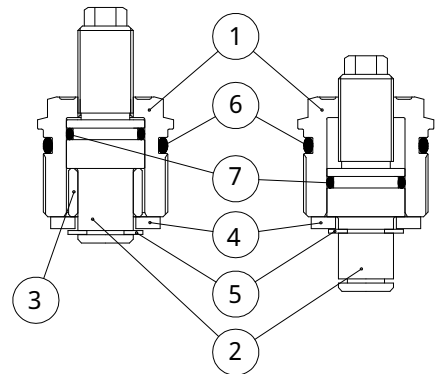
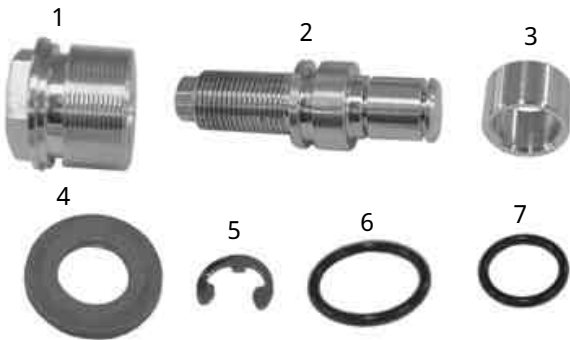
This manual should be retained for future reference.

~ Kit Contents ~

When installing onto a motorcycle other than Ape or XR50 / 100 Motard:

When installing onto Ape or XR50 / 100 Motard:

Or, when installing our optional handle holder of 06-02-110 (10mm up) or 06-02-111 (20mm up) on Ape or XR50 / 100 Motard:



No.	Parts Name	Qty	Repair Part Item No.	In packs of
1	Front fork bolt (Black-anodized)	2	90124-165-T10	1
	Front fork bolt (Hard-anodized)	2	90124-165-T20	1
2	Adjustable bolt	2	90125-165-T00	1
3	Collar	2	90126-165-T00	1
4	Washer, 12 x 24 x 2.5	2	00-00-0167	4
5	E ring, 8 mm	2	00-00-0168	2
6	O ring	2	00-00-0169	2
7	O ring, 14 mm	2	00-00-0170	2

Please note that in ordering repair parts, be sure to quote the Repair Part Item No. Otherwise, we may not be able to accept your orders.

There are some parts, however, for which we are not in a position to accept your order in just the quantity to be used. In this case, please take them in the quantity packed.

~ Installation Procedures ~

Assembly of initial adjuster main body:

In the case of Ape or XR50 / 100 Motard:

Attach a washer and an E-ring in this order to an adjustable bolt.



When installing onto a motorcycle other than Ape or XR50 / 100 Motard:

Attach a collar, a washer and an E-ring in this order to an adjustable bolt.



How to install the E-ring:

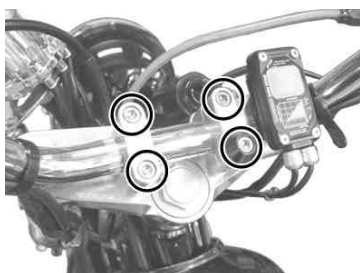
See the pictures below. Press the E-ring against a metal bar, or hold it with a plier, protecting the adjustable bolt with a waste cloth from being damaged.



Installation onto a motorcycle body:

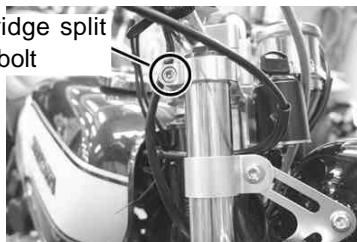
1 Remove the handle holder while keeping your motorcycle secure.

In the case of installing this product onto a motorcycle other than the Ape or XR50 / 100 Motard, this work is not required.



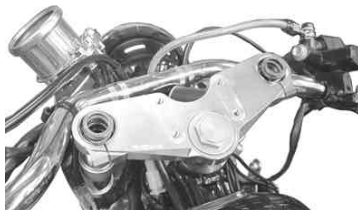
2 . Loosen a split clamp bolt on the top bridge.

Top bridge split clamp bolt



3 . Remove the top bolt.

If a right and a left top bolts are removed, the fork will shrink, which may cause your motorcycle to overturn. So, secure your motorcycle on a jack or front upstand.

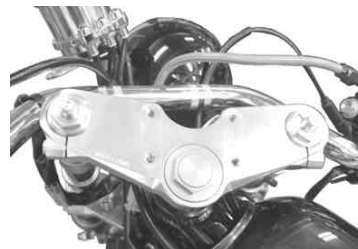


4 . Install the initial adjuster which you have just assembled, without using any tool.

If you use a tool from the start, the threaded portion may be broken.

5 . With a torque wrench, tighten up the initial adjuster.

Torque : 23 N · m (2.3 kgf · m)



6 . Loosen a steering-stem split clamp bolt and rotate the inner tube, and set the two logos to face the same direction.

If you are installing this product onto a motorcycle other than the Ape or XR50 / 100 Motard, loosen a handle split clamp bolt as well.



Steering-stem split clamp bolt

7 . If you are installing this product onto the Ape or XR50 / 100 Motard, set the inner tube so it does not protrude at all from the top bridge.

If the inner tube protrudes from the top bridge, the adjustable bolt may interfere with the steering handle.

8 . Tighten the split clamp bolts for steering stem and top bridge to the specified torque.

(In the case where our top bridge and steering stem are used on the Ape or XR50 / 100 Motard)

Steering stem

Torque : 26 N · m (2.6 kgf · m)

Top bridge

Torque : 12 N · m (1.2 kgf · m)

Handle holder

Torque : 12 N · m (1.2 kgf · m)

(In the case where a standard steering stem is used on other motorcycle models or on the Ape or XR50 / 100 Motard.)

Steering stem

Torque : 22 N · m (2.2 kgf · m)

Top bridge

Torque : 22 N · m (2.2 kgf · m)

Steering handle

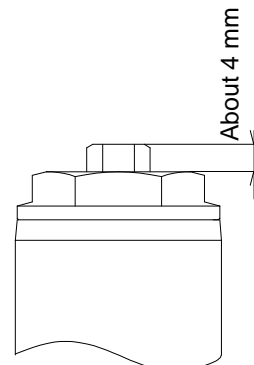
Torque : 22 N · m (2.2 kgf · m)

9 . Assemble the steering handle in just the reverse order of disassembly.

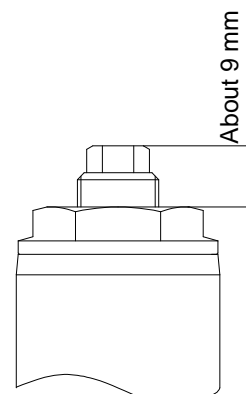
In the case of installing onto a motorcycle other than the Ape or XR50 / 100 Motard, this work is not required.

About the adjustment:

- Do not tighten up the adjustable bolt shorter than the height as described below.
- Arrange a right and left adjustable bolts to protrude the same length from the top bridge.



- In the case of installing onto the Ape or XR50 / 100 Motard, arrange a right and left adjustable bolts to be not higher than the one described below.



SPECIAL PARTS TAKEGAWA Co.,Ltd.

3-5-16 Nishikiorihigashi Tondabayashi Osaka Japan

TEL : 81-721-25-1357 FAX : 81-721-24-5059

URL : <http://www.takegawa.co.jp>